

## EGR Electronic Ground Fault Relay



### Features

- MCU Based Compact Design
- Ground Fault Protection with ZCT
- Trip & Run Indication LED
- Manual / Electrical Reset

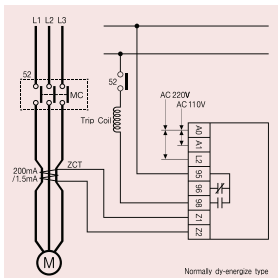
### Protection

Protective Item	Trip Time
Ground Fault	O-Time

### Specification

Ground Fault (GF)	Type	Range
Current Setting	05	50 - 500mA
	10	100 - 1,000mA
	20	200 - 2,500mA
Trip Time Setting	O-TIME	0.2 - 2.0 sec
Reset	Manual / Electrical (Push RESET Button or Interrupt Supply Power)	
Power Supply	110 / 220VAC, 50/60Hz	
Contact Rating	Mode/Rating	1-SPDT(1C), 3A/250VAC Resistive
	Status	Normally De-energized
Mounting	35mm DIN-Rail / Panel	

### Typical Wiring



## PMR Electronic Phase Monitoring Relay



### Features

- MCU Based Compact Design
- Multiple Protection Functions
- 2 - 15% Voltage Unbalance Setting
- Trip Cause Indication & Troubleshooting
- Manual / Electrical / Automatic Reset
- Ambient Insensitive
- Fail-safe Operation

### Protection

Protective Item	Trip Time
Phase Reversal	0.1 sec
Phase Loss	1 sec
Voltage Unbalance	5 sec

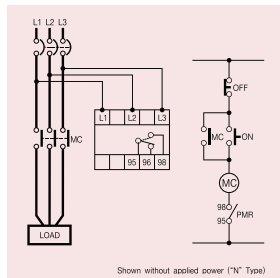
### Specification

Control Voltage	Type	Range
	220	3 φ 160 - 300VAC, 50/60Hz
	440	3 φ 340 - 480VAC, 50/60Hz
Reset	Manual (Instantaneous) / Electrical Automatically reset with 5 sec delay when supply power comes to normal.	
Contact Rating	Mode	1 - SPDT (1C)
	Rating	5A/250VAC Resistive
	Status	Normally Energized
Mounting	35mm DIN-rail/Rail	

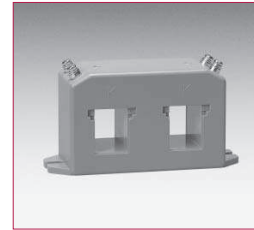
### Troubleshooting

Condition	LED Signal (Pulse Chart)			
	Green LED		Red LED	
Normal Run	On	Off	Off	Off
Voltage Unbalancing	On	Off	On	On
Voltage Unbalance	Off	Off	On	On
Trip	Phase R	Off	Flickering	On
	Phase S	Off	Flickering	On
	Phase T	Off	Flickering	On
	Phase Reversal	On	On	Flickering alternately

### Typical Wiring



## 2CT Current Transformer



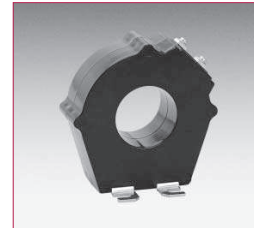
### Features

- Fitted to EOCR relays for Large Amp Motor Protection
- 1.0 Measuring Class
- For EOCR Only

### Specification

Model	2CT-100	2CT-150	2CT-200	2CT-300	2CT-400
Current Ratio	100 : 5A	150 : 5A	200 : 5A	300 : 5A	400 : 5A
Class	1.0	1.0	1.0	1.0	1.0
Budden	5VA	5VA	5VA	5VA	5VA
Insulation Voltage	600VAC				
Dielectric Strength	2kV				
Insulation	10M.Ω(500VDC Megger)				
Mounting	Panel				

## ZCT Zero Phase Current Transformer



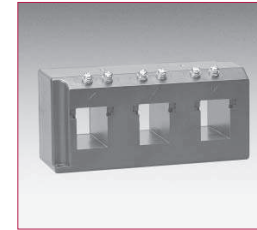
### Features

- Applicable for Ground Fault Protection Devices (EGR)
- Detect Zero Phase Current
- For EOCR Only

### Specification

Hole Dimension	Type	Hole
	ZCT - 35	35mm
	ZCT - 80	80mm
	ZCT - 120	120mm
Primary GF Current	200mA	
Secondary GF Current	1.5mA	
Tolerance	±10%	
Budden	10VA	
Rated Voltage	600VAC	
Dielectric Strength	2kV	
Insulation	10M.Ω(500VAC Megger)	
Mounting	Panel	

## 3CT Current Transformer



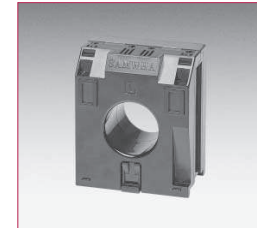
### Features

- Fitted to EOCR relays for Large Amp Motor Protection
- 1.0 Measuring Class
- For EOCR Only

### Specification

Model	3CT-100	3CT-150	3CT-200	3CT-300	3CT-400
Current Ratio	100 : 5A	150 : 5A	200 : 5A	300 : 5A	400 : 5A
Class	1.0	1.0	1.0	1.0	1.0
Budden	5VA	5VA	5VA	5VA	5VA
Insulation Voltage	600VAC				
Dielectric Strength	2kV				
Insulation	10M.Ω(500VDC Megger)				
Mounting	Panel				

## SR-CT Current Transformer



### Features

- Fitted to EOCR relays for Large Amp Motor Protection
- Satisfied with IEC Inverse Trip Characteristic
- Protection Class
- For EOCR Only

### Specification

Current Ratio	Type	Current Ratio (SR-CT)
	SR-CT-100	100 : 5A
	SR-CT-150	150 : 5A
	SR-CT-200	200 : 5A
	SR-CT-300	300 : 5A
	SR-CT-400	400 : 5A
Tolerance (Protection Class)	±3%(10P10 / IF=10)	
Budden	1.25VA (5VA: Measuring Class)	
Secondary Current	5A	
Insulation Voltage	600VAC	
Dielectric Strength	3kV	
Insulation	10M.Ω(500VDC Megger)	
Mounting	35mm DIN-Rail / Panel	